

ගම්පහ අධ්‍යාපන කලාපය Gampaha Education Zone					
දෙවන වාර ඇගයීම - 2025 Second Term Evaluation - 2025					
ශ්‍රේණිය } Grade	08	විෂයය } Subject	Science	කාලය } Time	3 hr
Name :-					

1. Select the answer that contains only vertebrates

- | | |
|-------------------------|---------------------|
| i) Snake, Earthworm | ii) Frog, Centipede |
| iii) Tilapia, Crocodile | iv) Whale, Octopus |

2. An example of a plant with Pairs of leaf arranged in opposite directions

- | | | | |
|---------------|-----------|------------------|-----------|
| i) Katu anoda | ii) Guava | iii) Rukaththana | iv) kanda |
|---------------|-----------|------------------|-----------|

3. Which of the following is the characteristics of solid matter?


- | | |
|---------------------------------------|------------------------|
| i) Can be compress | ii) Has definite shape |
| iii) Takes the shape of the container | iv) Has low density |

4. what tends to crumble when a small force is applied?

- | | | | |
|-----------|----------|------------|-------------|
| i) Copper | ii) Iron | iii) Glass | iv) Mercury |
|-----------|----------|------------|-------------|

5. Which musical instrument produce sound by vibrating air column

- | | | | |
|-----------|-------------|------------|---------------|
| i) Rabana | ii) Violine | iii) Flute | iv) Uddakkiya |
|-----------|-------------|------------|---------------|

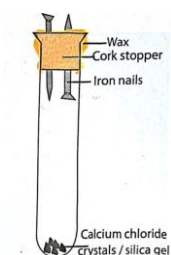
6. What does this symbol represent? 

- | | | | |
|------------|--------------|---------------|---------------|
| i) Ammeter | ii) Rheostat | iii) Resistor | iv) Voltmeter |
|------------|--------------|---------------|---------------|

7) The process of solid turning directly into a gas without become a liquid is called?

- i) Vaporization ii) Sublimation iii) Fusion iv) Condensation

8) The conclusion that can be drawn from this activity is?



- i) Water is needed for rusting of iron
ii) Water is not needed for rusting of iron
iii) Oxygen is needed for rusting of iron
iv) Air and water are needed for rusting of iron

9) The color of sodium hydroxide solution after adding a few drops of phenolphthalein is?

- i) Colorless ii) Yellow iii) Pink iv) Blue

10) What happens to a light-dependent resistor (LDR), When light falls on it?

- i) Resistance increases ii) Resistance decreases
iii) Resistance doesn't change iv) Current decreases

11) Urinary stones are formed by the deposition of which salt as crystals?

- i) Calcium carbonate ii) Calcium oxide
iii) Calcium oxalate iv) Calcium phosphate

12) Which of the following is not an observable change in the yeast and sugar solution activity ?

- i) The balloon has been inflated
ii) Smell the odor of alcohol
iii) Bubbles can be seen
iv) The color changes



13) The largest organ in the human body is,

- i) Lungs ii) Kidneys iii) Skin iv) brain

14) The group of animals that undergo metamorphosis is?

- i) Pisces ii) Amphibia iii) Reptilia iv) Aves

15) Select the pure substance from the following substances.

- i) Distilled water ii) Air ii) Sugar solution iv) Salt solution

16) Which of the following is the natural sound?

- i) Sound of vehicles ii) sound of drums
iii) Sound of wind iv) Sound of school Bell

17) Which of these materials is not a magnetic material?

- i) Iron nail ii) Brass nail iii) paper pins iv) safety pins

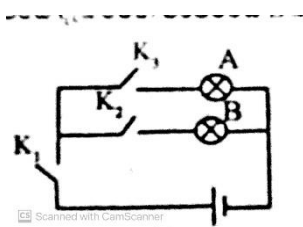
18) A substance that accelerates the rusting of iron is?

- i) Carbon solution ii) Lime juice iii) Limewater iv) Ash mixed water

19) The microbial group can be seen in water from soaked straw is?

- i) Yeast ii) Mvjucon iii) Paramecium iv) Euglena

20) In the circuit shown in the figure, which switches should be closed to light only bulb B?

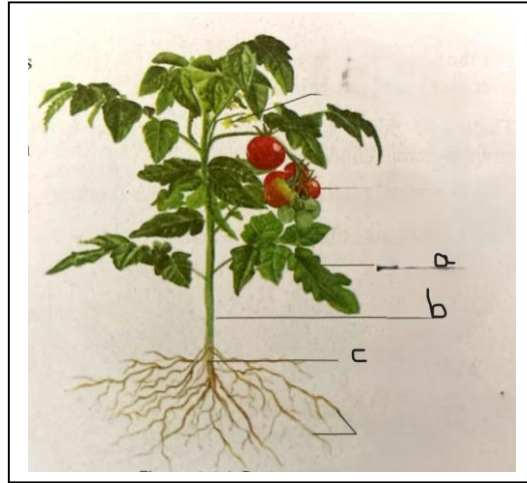


- i) Only K1
ii) K1 and K2
iii) K2 and K3
iv) K1, K2 and K3

Part 11

Answer the first question and four other questions.

01) A tree that had not borne fruit for a long time had coconut husks hanging from its branches. After a few months, the tree began to bear fruit, as shown in the figure.



- a) i)** Name parts a, b, c of the plant above. *(1 mark)*
- ii) State the functions of each of the parts a, b, c *(3 marks)*
- iii) What did the student expect by hanging the husks on the branches of the plant? *(1 mark)*
- iv) Mention two adaptations of leaves that allow them to efficiently absorb the light energy required for photosynthesis. *(2 marks)*

b) Select and write the plant that matches the following characteristics

sugarcane, potato, cactus, carrot, guava, dahlia:

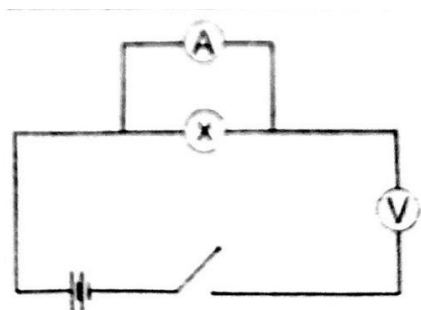
- a) A photosynthetic stem
- b) storage stem
- c) Storing food in the tap root
- d) Storing food in the underground stem
- e) propagative roots

(1×5 marks)

c) Complete the following table on the classification of living things:

The category animals belong to	common Characteristics	examples
i) _____ —	Holds soft tissue	Mollusca
Arthropoda	ii) _____	cockroach
iii) _____	They are called segmented worms	iv) _____

02) The figure shows a setup designed by a group of students to measure the current flowing through a bulb and the potential difference across it.



i) Identify and correct any errors in the circuit diagram. Then, redraw the correct circuit.
(2Marks)

(ii) How are the cells connected in the circuit? (1 mark)

(iii) State two observable effects of electricity when the switch is closed in the correctly connected circuit. (2Marks)

(iv) (a) If it is necessary to adjust the current flowing through the circuit, which device should be added for that purpose? (1 mark)

(b) Draw the circuit symbol for this device. (1 mark)

(v) Mention two measures that can be taken to minimize electricity losses in the home. (2Marks)

(vi) What is the most commonly used renewable energy source for generating electricity in homes today? (2Marks)

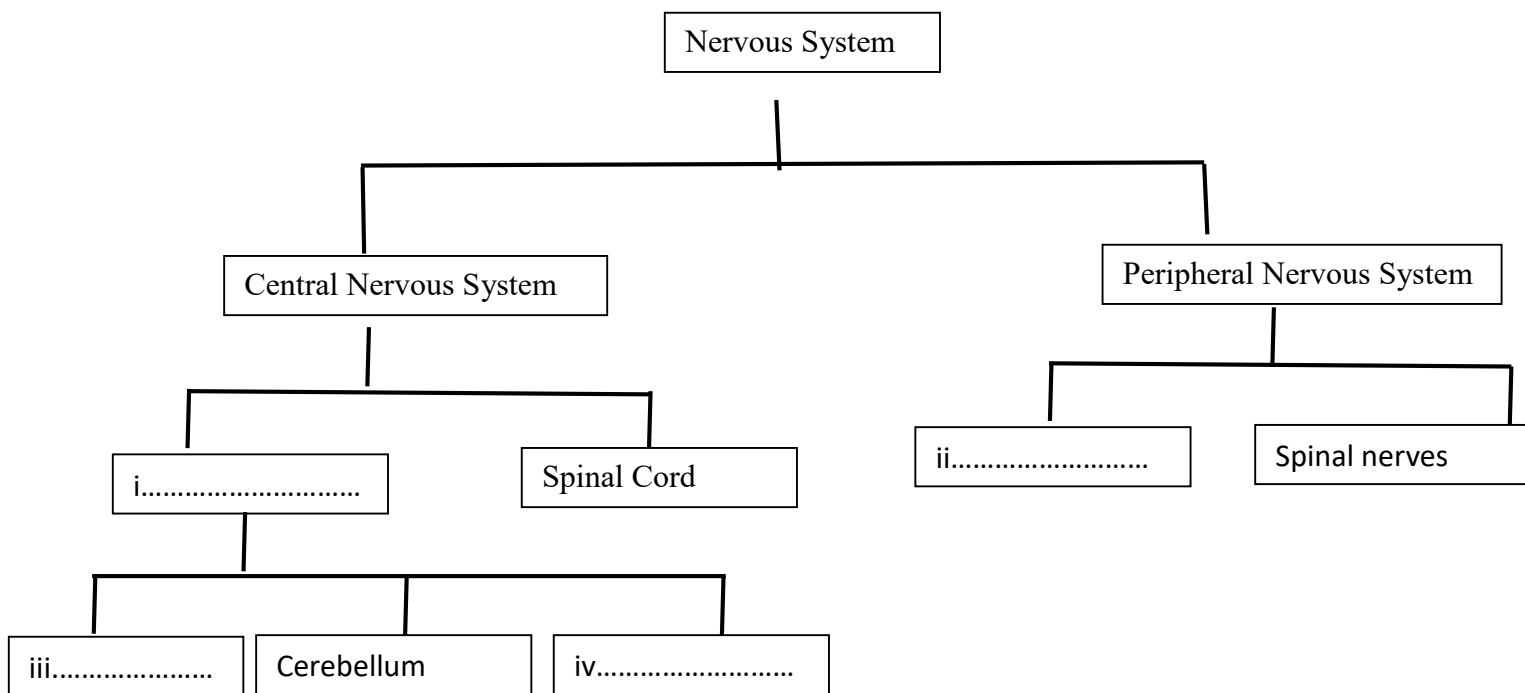
03) The non-beneficial products produced during the metabolic processes in the human body are called excretory substances

i) What is the process of expelling these excretory substances from the body called? *(1 mark)*

ii) Name three excretory organs of the human body. *(3 Marks)*

iii) Which organ produces the nitrogenous excretory substance among them? *(1 Mark)*

b) Complete the blanks below



(M. 1 × 4)

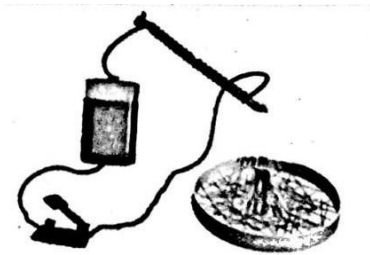
c) Choose and write the part of the nervous system responsible for performing the following functions:

i) Control of voluntary muscle actions *(1 mark)*

ii) Control of body balance *(1 mark)*

04) The following shows activities carried out by 4 groups of Grade 8 students.

a)



i) What observation can be seen when the switch is opened? (1 mark)

ii) What is this type of magnet called? (1 mark)

iii) Mention instances where this type of magnet is used in daily life. (1 mark)

b)



i) When this tuning fork vibrates, which tuning fork gives a higher frequency? (1 mark)

ii) What is the reason for this? (1 mark)

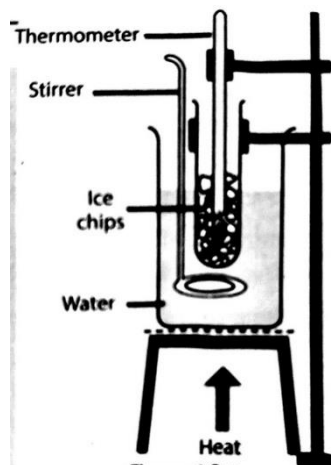
c)



i) What observation can be seen here? (1 mark)

ii) What conclusion can be drawn from this activity? (1 mark)

d)



i) What happens to the thermometer reading when ice is heated and melts? (1 mark)

ii) After ice turns into water, it is further heated. At a certain point, the temperature of the water remains constant. What is the phase change that occurs at that point? (1 mark)

iii) State the melting point and boiling point of water. (2 marks)

05) a) Nimal's mother mixed flour, coconut water, and 2 teaspoons of sugar, then left it covered for a few hours to make hoppers. She said that after a few hours, the hopper mixture had risen.

- i) What is the name of the microbial process that took place in the mixture? *(1 mark)*
- ii) Which microorganism contributed to the fermentation of the flour mixture? *(1 mark)*
- iii) What is the reason for adding sugar to the hopper mixture? *(1 mark)*
- iv) Mention 2 factors necessary for the growth of microorganisms. *(2 mark)*
- v) What are the microbial activities responsible for the degradation of protein- and lipid-rich foods? *(2 marks)*

b) i) Name the following changes as physical or chemical changes. *(2 marks)*

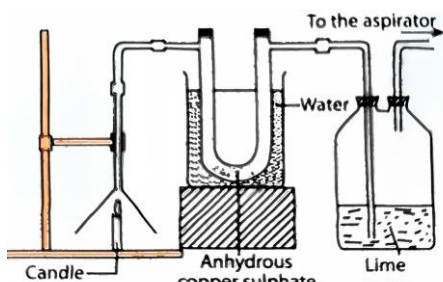
- a) Combustion of wax
- b) Rusting
- c) Burning of magnesium strip
- d) Melting of ice

ii) Mention two observations that suggest a chemical change has taken place? *(2 marks)*

06) a) Dry coconut leaves start burning quickly, while coconut shells take longer to catch fire.

- i) State two factors necessary for combustion. *(2 marks)*
- ii) Which factor required for combustion is increased due to the delay in the combustion of coconut shells? *(1 mark)*
- iii) Mention 2 types of energy released during fuel combustion. *(2 marks)*
- iv) Write one example each of a solid, liquid, and gaseous fuel. *(3 marks)*

b) A laboratory setup designed to examine the products of fuel combustion is shown below.



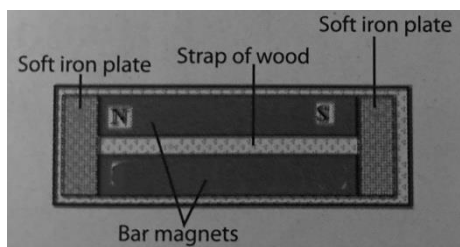
- i) Mention two observations that can be seen in this setup. *(2 marks)*
- ii) According to this activity, state a product released during the combustion of fuel. *(1 mark)*
- iii) What is the reason for the U-tube being immersed in a container of water? *(1 mark)*

07) a) The diagram below shows an activity carried out by a group of students in the laboratory to test the validity of a certain rule.



- i) What are the chemical compounds used for x and y? (2 marks)
- ii) What could be the relationship between the mass before and after the reaction? (1 marks)
- iii) What is the theory tested here? (2 marks)
- iv) Name the scientist who first experimentally verified this law? (1 mark)

b) A diagram showing how to store a bar magnet is shown below.



- i) Mark the poles of the bar magnet whose poles are not marked above (2 marks)
- ii) State 2 main reasons that lead to the decay of magnetism. (2 marks)
- iii) State one use of permanent magnets. (1 marks)